



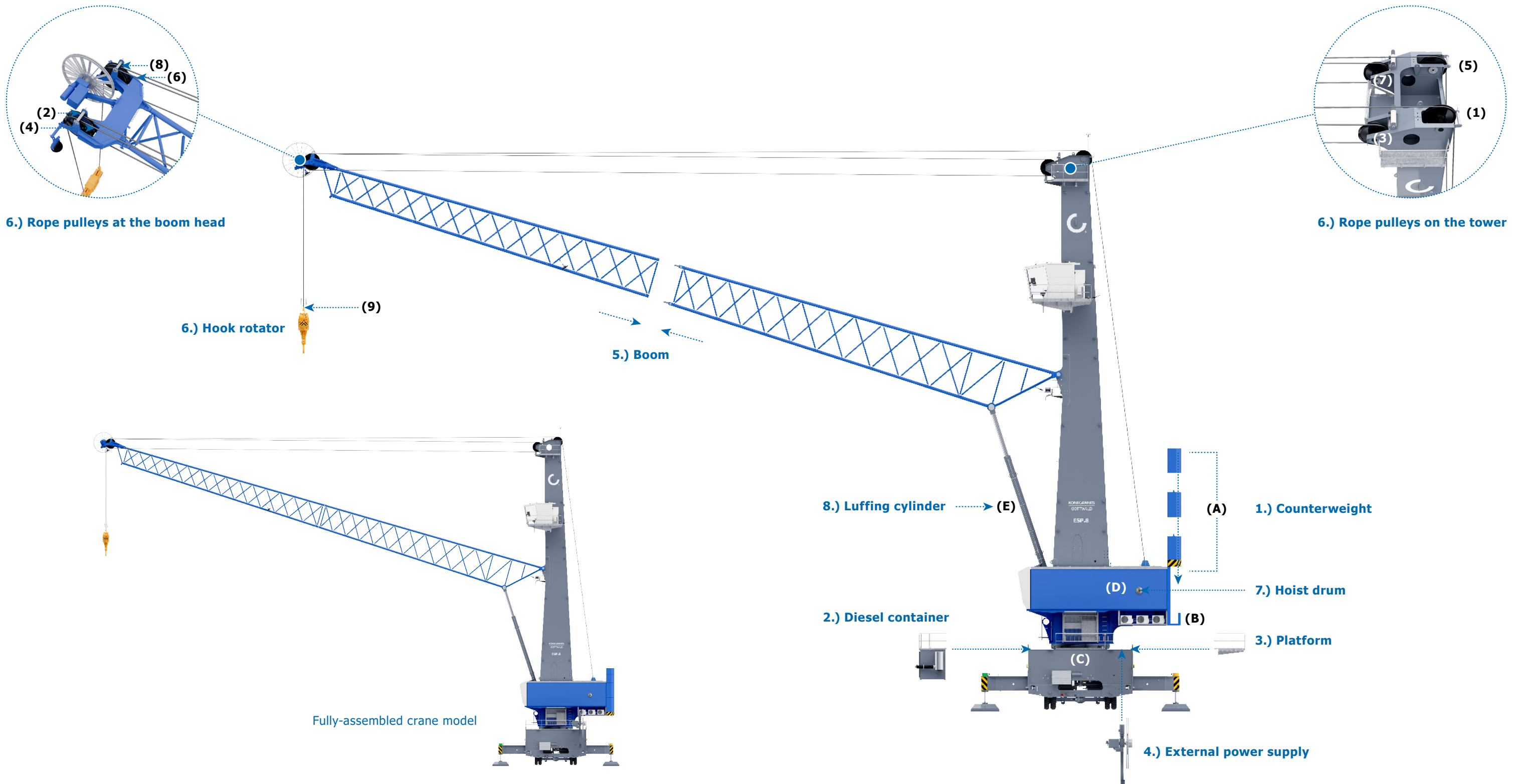
Generation 6
**ESP.8 Mobile Harbor Crane
Assembly Instructions**



Konecranes GmbH • Forststrasse 16 • 40597 Düsseldorf, Germany
Phone: +49 211 7102-0 • mhc.marketing@konecranes.com • www.konecranes.com



NZG-Modelle GmbH • Sigmundstraße 147 • 90431 Nürnberg, Germany
Phone: +49 911 65 96 50 • Fax: +49 911 61 17 76 • info@nzg.de • www.nzg.de



Konecranes Gottwald ESP.8 Mobile Harbor Crane

Assembly instructions

1.) Counterweight

The counterweight is composed of three segments. Place them at the rear of the superstructure (B) in the following order (A) from bottom up:

- Segment with warning marks,
- Segment with Konecranes Gottwald logo,
- Blue segment with notch.

2.) Diesel container

Mount the diesel container on the left side of the chassis (C). Use the magnet inside to fix it on the chassis.

3.) Platform

Mount the platform on the right side of the chassis (C).

4.) External power supply

If you want to equip the crane with an external power supply, mount the cable reel on the rear of the chassis (C) – rear = without driver cab.

5.) Boom

Fit the two boom segments together. Secure this connection with the attached clips.

6.) Ropes and hook rotator

To mount the ropes and the hook rotator, do as follows:

- Pass the left rope from the superstructure to the rear left rope pulley on the tower (1) and onward to the inner left rope pulley on the boom head (2).
- Then pass it back to the front left rope pulley on the

tower (3) and then forward again to the outer left rope pulley on the boom head (4). Let the rope hang freely from that pulley for the time being.

- Now pass the right rope from the superstructure to the rear right rope pulley on the tower (5) and onward to the inner right rope pulley on the boom head (6).
- Then pass it back to the front right rope pulley on the tower (7) and then forward again to the outer right rope pulley on the boom head (8). Let the rope hang freely from that pulley for the time being.
- There are two eyes on the hook rotator. Pass each of the two freely hanging ropes through one and then the other eye. Then tie the rope ends together (9).

Crane functions

7.) Hoist drum: Adjusting the height of the hook

To adjust the height of the hook, use the hole on the left side of the superstructure (D). You can then move the rope drum inside the superstructure with the attached socket spanner to adjust the hook height.

8.) Luffing cylinder: Adjusting the height of the boom

To adjust the height of the boom, use the screw (E) on the luffing cylinder:

- Loosen the screw with the attached hex-wrench to lower or raise the boom.
- Tighten the screw with the attached hex-wrench to keep the boom in the selected position.